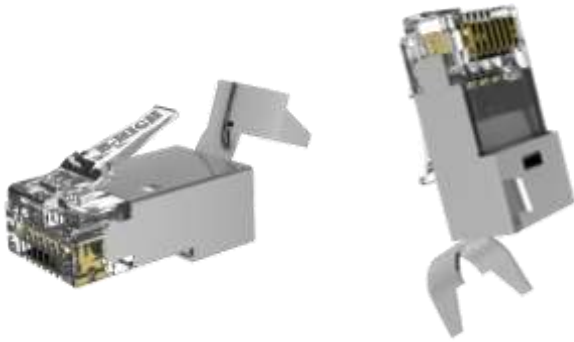


Modular Plug

Cat.6A STP Modular Plug With Tail Clip



Wire Position
4 Up/ 4 Down



BH-01-00210

Cat.6A STP RJ45, Round Cable, 50U", With Insert, 1.5mm, 94-V2

Features

- Easy Installation: Two Piece Design For Fast Wiring
- Insert Dimension: 1.5mm can fit insulation 1.35~1.45 mm
- Terminal with 3 prongs contact blades: Fit both Stranded and Solid wire 23~26AWG
- Gold Plating: 50 μ " with test report by X-RAY machine
- Crystal RJ45 connector compliance with FCC Standard

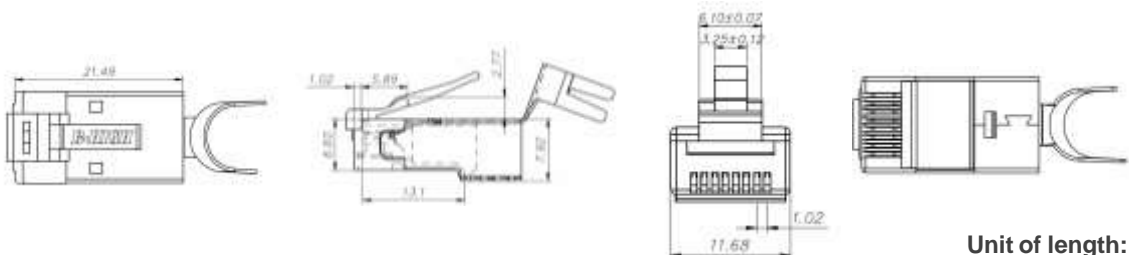
General

- Dielectric Voltage Withstand Test: Test 60S 1000V AC/DC Test Pass
- Insulation Resistance: 500 M Ω .
- Contact Resistance: 20m Ω Max.
- Operating & Storage Temperature Range: -40° ~ 70°C
- Insertion Test : 1,200 times
- Tensile Test: \geq 20pound (9.1kg)

Material

- Shielded shell: Copper alloy
- Polycarbonate 94V2
- Gold plating 50 μ "

Technical Drawing



Unit of length: mm